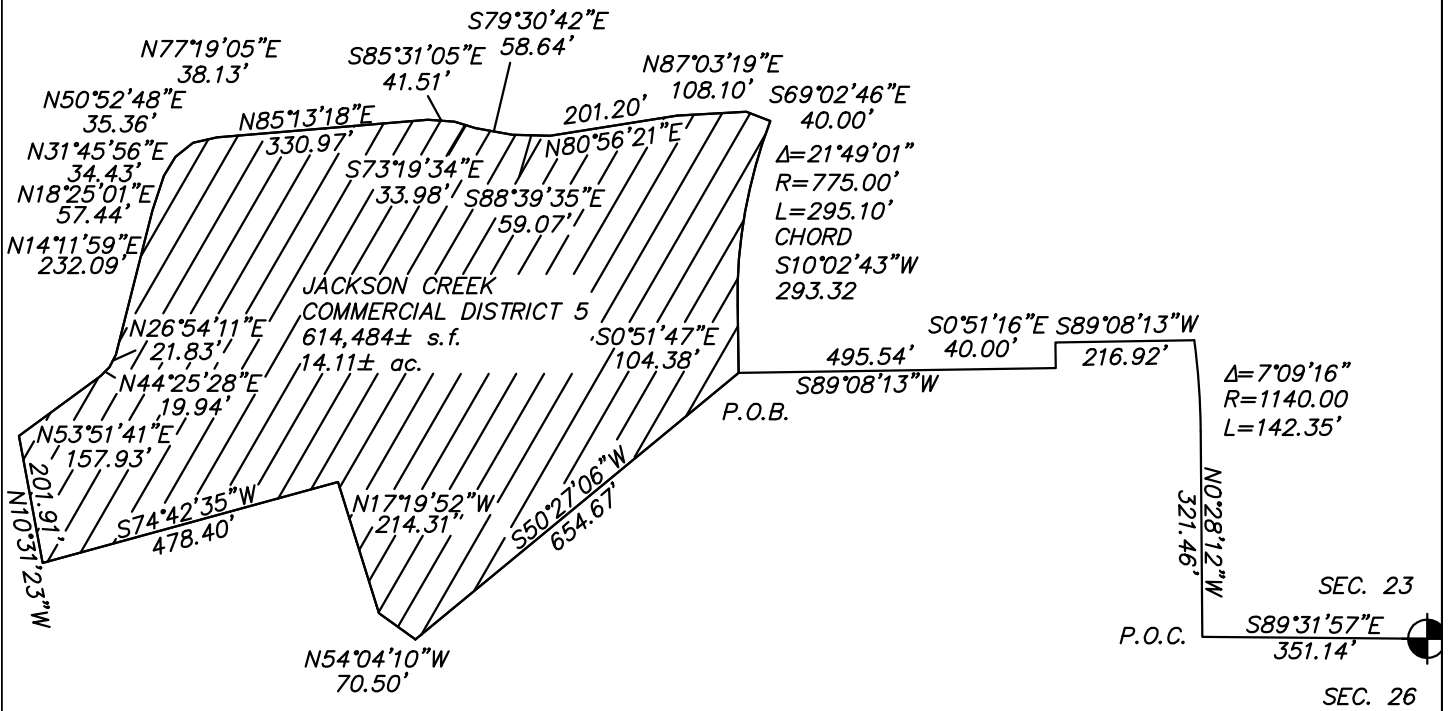




1" = 300'



JACKSON CREEK COMMERCIAL
 METRO DISTRICT EXHIBITS
 JCCMD 5
 MONUMENT, CO

DWG: JCCMD
 SCALE: VARIES
 DATE: 8/31/22
 DRAWN: KMO
 CHECKED:
 PROJECT: 20054

LWA LAND SURVEYING, INC.
 953 E. FILLMORE STREET
 COLORADO SPRINGS, CO 80907
 TELEPHONE (719) 636-5179

REVISIONS:

DISTRICT COURT, EL PASO COUNTY, COLORADO El Paso County Judicial Building 270 South Tejon Street Colorado Springs, CO 80903 Telephone: (719) 452-5000	DATE FILED: October 25, 2022 2:57 PM ▲ COURT USE ONLY ▲
IN RE THE ORGANIZATION OF JACKSON CREEK COMMERCIAL METROPOLITAN DISTRICT NO. 5	
<i>By the Court</i>	Case Number: 2020CV31813 Division: 16
[PROPOSED] ORDER CORRECTING THE DISTRICT'S LEGAL DESCRIPTION	

THIS MATTER, having come before the Court on Jackson Creek Commercial Metropolitan District No. 5's Motion to Correct the District's Legal Description and the Court being fully informed on its premises, IT IS ORDERED:

The Legal Description attached to the Findings, Order and Decree to Create District dated November 18, 2020 is STRUCK and REPLACED with the Corrected Legal Description attached with this Order.

The effective order of the Findings, Order and Decree shall remain November 18, 2020.

ENTERED this ____ day of _____, 2022.

October 25, 2022

State of Colorado, County of El Paso
 Certified to be a true and correct
 copy of the original in my custody.

NOV 03 2022

SHERI KING
 CLERK OF THE DISTRICT COUNTY COURT
 By *[Signature]* Deputy

BY THE COURT:

Diana K May

 District Court Judge

Diana K May
 District Court Judge

Diana K May

Diana K May
 District Court Judge



EXHIBIT A
Corrected Legal Description

JACKSON CREEK COMMERCIAL METROPOLITAN DISTRICT 5

A TRACT OF LAND BEING A PORTION OF THE SOUTHEAST QUARTER OF SECTION 23 AND THE NORTHEAST QUARTER OF SECTION 26, TOWNSHIP 11 SOUTH, RANGE 67 WEST OF THE 6th P.M., IN THE TOWN OF MONUMENT, EL PASO COUNTY, COLORADO, BEING MORE PARTICULARLY DESCRIBED AS FOLLOWS:
COMMENCING AT THE POINT OF INTERSECTION OF THE WESTERLY RIGHT OF WAY LINE OF JACKSON CREEK PARKWAY AS DESCRIBED IN THE DOCUMENT RECORDED UNDER RECEPTION NO. 203270646 OF THE RECORDS OF THE EL PASO COUNTY CLERK AND RECORDER AND THE NORTH LINE OF THE NORTHEAST QUARTER OF SAID SECTION 26, FROM WHENCE THE NORTHEAST CORNER OF SECTION 26 BEARS S89°31'57"E A DISTANCE OF 351.14 FEET;
THENCE N00°28'12"W ON SAID WESTERLY RIGHT OF WAY LINE OF JACKSON CREEK PARKWAY A DISTANCE OF 321.46 FEET TO A POINT OF CURVE;
THENCE NORTHWESTERLY CONTINUING ON SAID WESTERLY RIGHT OF WAY ON THE ARC OF A CURVE TO THE LEFT HAVING A RADIUS OF 1140.00 FEET, THROUGH A CENTRAL ANGLE OF 7°09'16" AN ARC DISTANCE OF 142.35 FEET;
THENCE S89°08'13"W A DISTANCE OF 216.92 FEET;
THENCE S00°51'16"E A DISTANCE OF 40.00 FEET
THENCE S89°08'13"W A DISTANCE OF 495.54 FEET TO THE POINT OF BEGINNING OF THE TRACT DESCRIBED HEREIN;
THENCE S50°27'06"W A DISTANCE OF 654.67 FEET;
THENCE N54°04'10"W A DISTANCE OF 70.50 FEET;
THENCE N17°19'52"W A DISTANCE OF 214.31 FEET;
THENCE S74°42'35"W A DISTANCE OF 478.40 FEET, MORE OR LESS, TO A POINT ON THE EASTERLY RIGHT OF WAY LINE OF INTERSTATE 25;
THENCE N10°31'23"W ON SAID EASTERLY RIGHT OF WAY OF INTERSTATE 25 A DISTANCE OF 201.91 FEET;
THENCE N53°51'41"E A DISTANCE OF 157.93 FEET;
THENCE N44°25'28"E A DISTANCE OF 19.94 FEET;
THENCE N26°54'11"E A DISTANCE OF 21.83 FEET;
THENCE N14°11'59"E A DISTANCE OF 232.09 FEET;
THENCE N18°25'01"E A DISTANCE OF 57.44 FEET;
THENCE N31°45'56"E A DISTANCE OF 34.43 FEET;
THENCE N50°52'48"E A DISTANCE OF 35.36 FEET;
THENCE N77°19'05"E A DISTANCE OF 38.13 FEET;
THENCE N85°13'18"E A DISTANCE OF 330.97 FEET;
THENCE S85°31'05"E A DISTANCE OF 41.51 FEET;
THENCE S73°19'34"E A DISTANCE OF 33.98 FEET;
THENCE S79°30'42"E A DISTANCE OF 58.64 FEET;
THENCE S88°39'35"E A DISTANCE OF 59.07 FEET;
THENCE N80°56'21"E A DISTANCE OF 201.20 FEET;
THENCE N87°03'19"E A DISTANCE OF 108.10 FEET;
THENCE S69°02'47"E A DISTANCE OF 40.00 FEET;
THENCE SOUTHWESTERLY ON THE ARC OF A CURVE TO THE LEFT HAVING A RADIUS OF 775.00 FEET, THROUGH A CENTRAL ANGLE OF 21°49'01" AN ARC DISTANCE OF 295.10 FEET, THE LONG CHORD OF WHICH BEARS S10°02'43"W A DISTANCE OF 293.32 FEET;
THENCE S0°51'47"E A DISTANCE OF 104.38 FEET TO THE POINT OF BEGINNING.

THE DESCRIBED TRACT CONTAINS 14.11 ACRES, MORE OR LESS.

THE BASIS OF BEARINGS FOR THIS DESCRIPTION IS THE EAST LINE OF THE NORTHEAST QUARTER OF SECTION 26, S00°29'34"E A DISTANCE OF 2662.55 FEET. THE LINE WAS FOUND TO BE DOCUMENTED BY A 3-1/4" DIA. ALUMINUM CAP PLS 13155 ON THE NORTH AND A 3-1/4" DIA. ALUMINUM CAP PLS 25955 ON THE SOUTH. THE DIRECTION IS BASED ON THE CREEKSIDE COMMERCIAL NORTH SUBDIVISION PLAT REC. NO. 215713708.